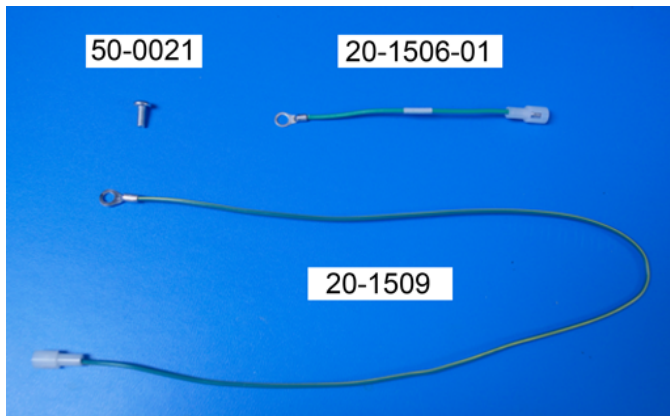


M00-20-6203-K C/OPT Receipt Printer Ground Wire Kit Installation

This instruction is provided to address a grounding issue with the installed C/OPT printer. You will need the P/N 20-1509 C/OPT Ground Cable Assembly and these instructions.

P/N M00-20-6203-K Ground Wire Kit Components

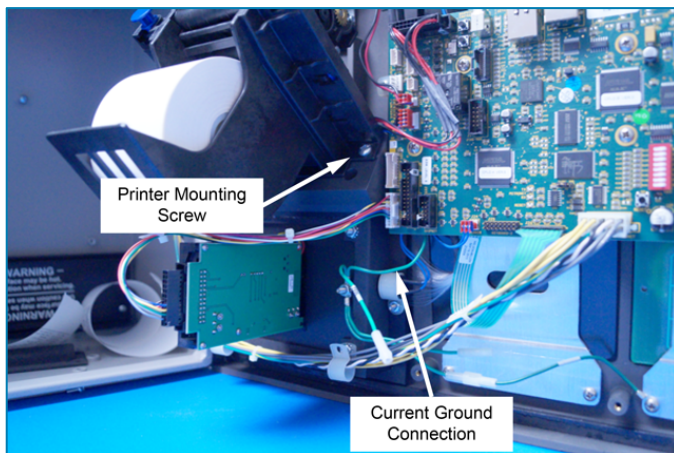


One (1) short ground wire P/N 20-1506-01.

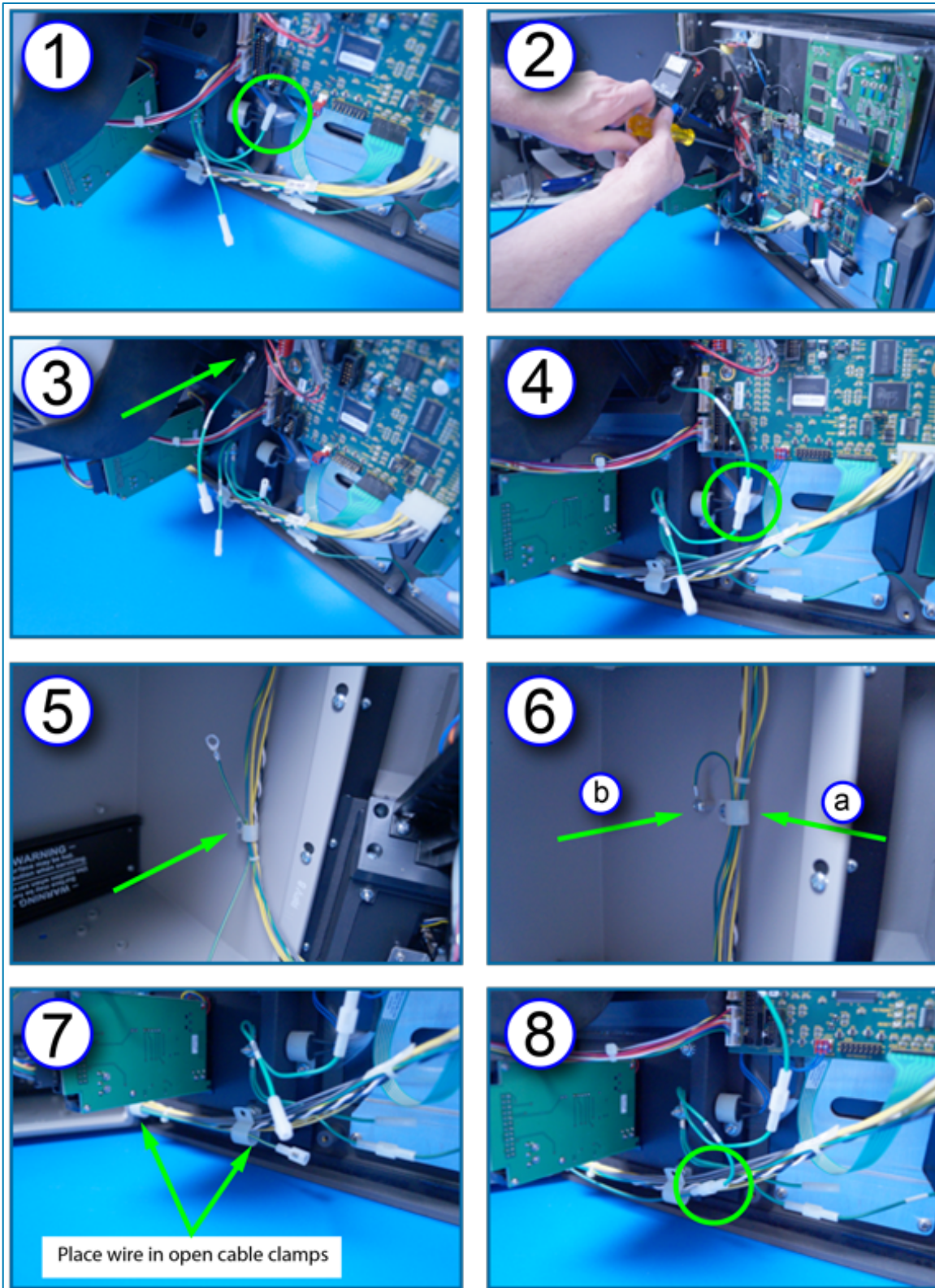
One (1) long ground wire P/N 20-1509.

One (1) ground screw (8-32 x 3/8") P/N 50-0021.

Installation



Current State



1. Pull gently on the current ground connection that runs behind the board to unplug the wire (the wire and terminal behind the board will not be reconnected).
2. Remove the mounting screw that holds the printer to the mounting block.
3. Insert the screw through the ring terminal of the short ground wire provided (20-1507-1). Reattach the screw and wire to the mounting block.
4. Plug the short ground cable (20-1506-01) into the connector of the ground wire that was unplugged in step 1.
5. Route the long wire (20-1509) by first stringing its ring terminal through the lower cable clamp located on the inside right side of the C/OPT enclosure.
6. Continue to route the wire:
 - a. String the ring terminal through the upper cable clamp
 - b. Secure the ring terminal to the standoff with the supplied 8-32 x 3/8" screw (50-0021).
7. Insert the connector end of the wire into the two open cable clamps below the receipt pocket on the door.
8. Plug the connector of the long ground cable into the remaining connector attached to the receipt pocket.