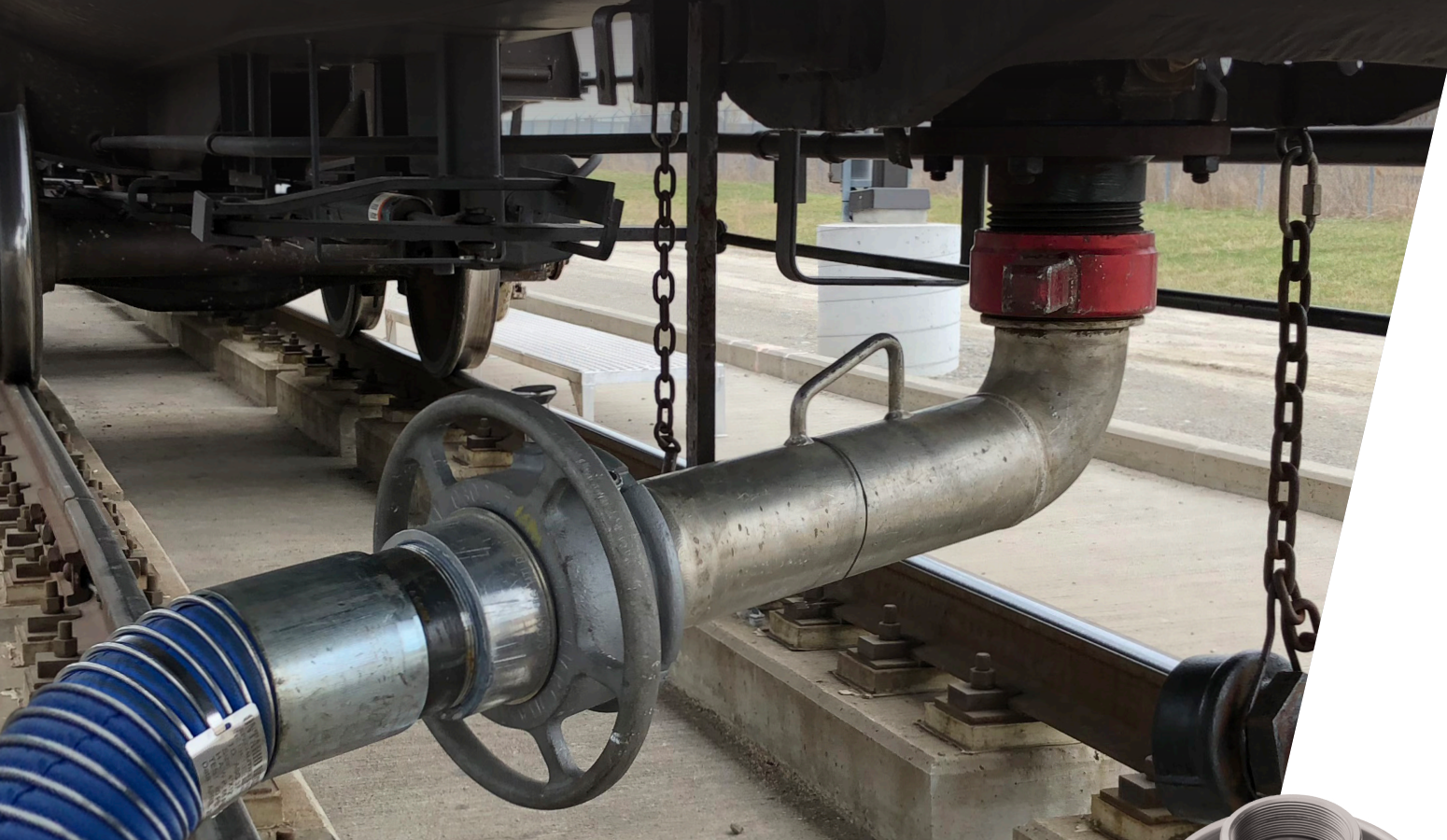


LQC SERIES

The World's Safest Coupling



Guards against accidental disconnects

The Twister Locking Quick Connect (LQC) is the only coupling in the world guaranteed to not come off when pressure is in the line. Engineered for critical-service applications, the LQC excels in extreme temperatures and pressures.

Features & Benefits:

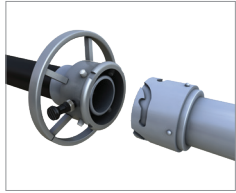
- **RAPID ENGAGEMENT**, 1/4 twist on/off
- **LOW-PRESSURE OR VACUUM LOCKING**
- **COUPLING LOCKS DURING UNCOUPLING**
should residual product or line pressure be present
- **SMOOTH BORE**, ideal for pigging applications
- **COMMERCIALLY AVAILABLE O-RING SEALS**
- **OPTIONAL SNAP-IN CUSTOMIZED HANDLES** for tight spots



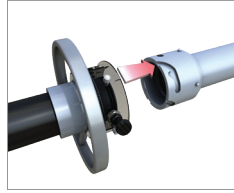
LQC
Locking Quick Connect

LQC Quick Coupling – Connecting with a Twist

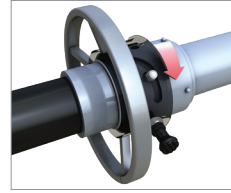
Pressure or Vacuum Energizes Sealing and Locking



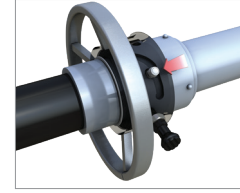
Easy Alignment



Pressure Locking The Ultimate Safety Feature



1/4-Turn Rapid Engagement



Order Guide

NOMINAL SIZE
10 - 1"
20 - 2"
30 - 3"
40 - 4"
60 - 6"

PLAIN END COATING
N - None
A - Electroless Ni (High Phos)
Z* - Zinc
E - Annodized Red
S - Annodized Clear
F - Annodized Blue

MALE END COATING
- Blank if Female Half Only
N - None
A - Electroless Nickle (High Phos)
Z* - Zinc
E - Annodized Red
F - Annodized Blue

HILTAP DRAWING PACKAGE CODE
3124 - 1", 2", 3", 4" Couplings
3122 - 6" Coupling
3109 - 4" LQC Closure for PIG Launcher
3098 - 2" and 3" LQC Closure for PIG Launcher
3095 - 2" LQC Closure for PIG Launcher
3216 - 3" LQC Closure for PIG Launcher
3075 - 6" LQC Closure for PIG Launcher

LQC - 30 - 1 N 1 N - A - 3124 - A N - H - V7

FITTING DESIGNATION
LQC - Locking Quick Connect

PLAIN END CONNECTION TYPE
1 - Female NPT
3 - Butt Weld
5 - Female Socket Weld
SC - Seal Cap

MALE END CONNECTION TYPE
X - None (Female Half Only)
1 - Female NPT
3 - Butt Weld
5 - Female Socket Weld
SP - Seal Plug

MATERIAL
A - Stainless Steel A479-316/316L (SA)
D - Carbon Steel A350 Gr. LF2 Cl.1 NACE
H - Aluminum 6061-T6

SLEEVE STYLE
A - Standard Wagon Wheel Sleeve with Plunger
HND - Wagon Wheel with Crank Handle Sleeve
LH - Loop Handle Sleeve (No Standard)

SLEEVE COATING CODE
N - None
A - Electroless Nickle (High Phos)
Z* - Zinc
E - Annodized Red
S - Annodized Clear
F - Annodized Blue

O-RING MATERIAL
V7 - Fluorocarbon 75D

SLEEVE MATERIAL IF DIFFERENT FROM WETTED PARTS
A - Stainless Steel A479-316/316L (SA)
D - Carbon Steel A350 Gr. LF2 Cl.1 NACE
H - Aluminum 6061-T6

* Zinc coating standard on all carbon steel products

LQC Temperature and Pressure Ratings

Size	Fluorocarbon, EPDM, Sat. Nitrile, Encap Fluorocarbon		Buna-N		Neoprene		Max PSI	Max BAR
1" CS	250° F	121° C	248° F	120° C	250° F	121° C	655	45
1" SST	250° F	121° C	248° F	120° C	250° F	121° C	560	39
1" Alum	250° F	121° C	248° F	120° C	250° F	121° C	260	18
2" Aluminum & 2" CS and SST w/ Aluminum Sleeve	250° F	121° C	248° F	120° C	250° F	121° C	260	18
2" CS	250° F	121° C	248° F	120° C	250° F	121° C	655	45
2" SST	250° F	121° C	248° F	120° C	250° F	121° C	560	39
3" Aluminum & 3" CS and SST w/ Aluminum Sleeve	250° F	121° C	248° F	120° C	250° F	121° C	260	18
3" CS	250° F	121° C	248° F	120° C	250° F	121° C	655	45
3" SST	250° F	121° C	248° F	120° C	250° F	121° C	560	39
4" Aluminum & 4" CS and SST w/ Aluminum Sleeve	250° F	121° C	248° F	120° C	250° F	121° C	260	18
4" CS	250° F	121° C	248° F	120° C	250° F	121° C	655	45
4" SST	250° F	121° C	248° F	120° C	250° F	121° C	560	39

NOTE: This chart represents the most commonly requested specifications. Call (513) 932-9114 if higher temperature and pressure tolerances are required.



www.opw-es.com | 2726 Henkle Drive | Lebanon, Ohio 45036 | Phone: (513) 932 9114 | Fax: (513) 932 9845

NOTE: All information subject to engineering and/or other changes. All trade names are copyrighted. Patents Pending. ©2018 OPW Engineered Systems. ©2018 Delaware Capital Formation, Inc. All Rights Reserved. DOVER and the DOVER logo are registered trademarks of Delaware Capital Formation, Inc., a wholly-owned subsidiary of Dover Corporation.