

UPDATED URGENT RECALL ALERT – OPW SWIVELS

May 12, 2017

UPDATED! IMMEDIATE ACTION REQUIRED TO REPLACE HOSE SWIVEL CONNECTORS

AFFECTED OPW PRODUCTS:

- 241 and 241C Swivel Connectors (3/4 inch and 1 inch models)*
 - 36S Swivel Connectors (3/4 inch and 1 inch models)
 - **20S Swivel Connectors (3/4 inch and 1 inch models)**
- * May have been sold as part of a hose kit

Issue: In certain rare cases, the retaining rods used in these models may not perform as expected, resulting in unintended separation at the swivel connections.

Hazard: Unintended separation at the swivel may lead to fuel spillage, posing a chemical or potential fire hazard. While regulations and warnings prohibit the presence of ignition sources at the pump, serious personal injury can result if an ignition source is nevertheless present.

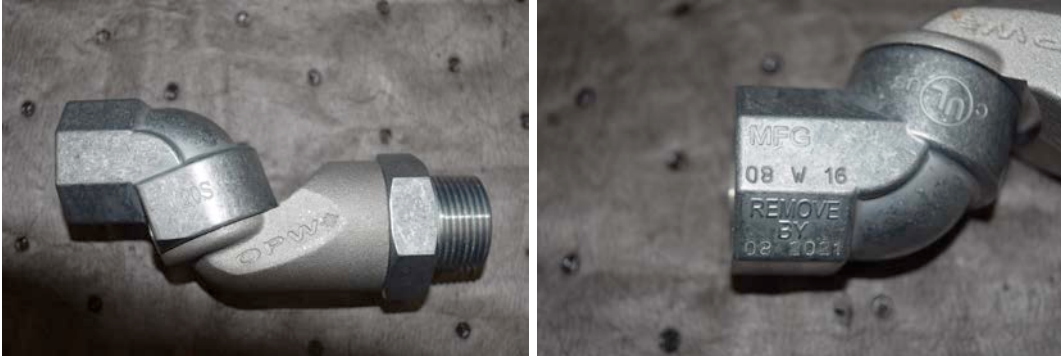
The affected swivels are branded with the model number and a manufacture date on the swivel's end in the format of: MM-YY or MM-DD-YEAR or MM-YEAR. For 241 and 36S swivels, only swivels with a stamped MFG date of January 2013 through March 2017 are affected. **For 20S swivels, only swivels with a stamped MFG date of January 2013 through August 2017 are affected.** The affected swivels and stamped dates are:

Swivel Model #	Description
241TPS-0241	Swivel, 2-Plane 3/4"Mx3/4"F NPT
241TPS-0241C	Swivel, 2-Plane 3/4"Mx3/4"F NPT, NAFTA
241TPS-0492	Swivel, 2-Plane 3/4"Mx3/4"F NPT, E85
241TPS-1000	Swivel, 2-Plane 1"Mx1"F NPT
241TPS-1000C	Swivel, 2-Plane 1"Mx1"F NPT, NAFTA
241TPS-10RF	Swivel, 2-Plane 1"Mx1"F NPT, E25 B20
241TPS-75RF	Swivel, 2-Plane 3/4"Mx3/4"F NPT, E25 B20
36S-5080	Swivel, 1-Plane 3/4"Mx3/4"F NPT
36S-5090	Swivel, 1-Plane 1"Mx1"F NPT
S034H1311	3/4" ALUMINUM HOSE SWIVEL, Retail Package
S100H1312	1" ALUMINUM HOSE SWIVEL, Retail Package
20S-7575	Swivel, 2-Plane 3/4"M x 3/4"F NPT
20S-1010	Swivel, 2-Plane 1"M x 1"F NPT

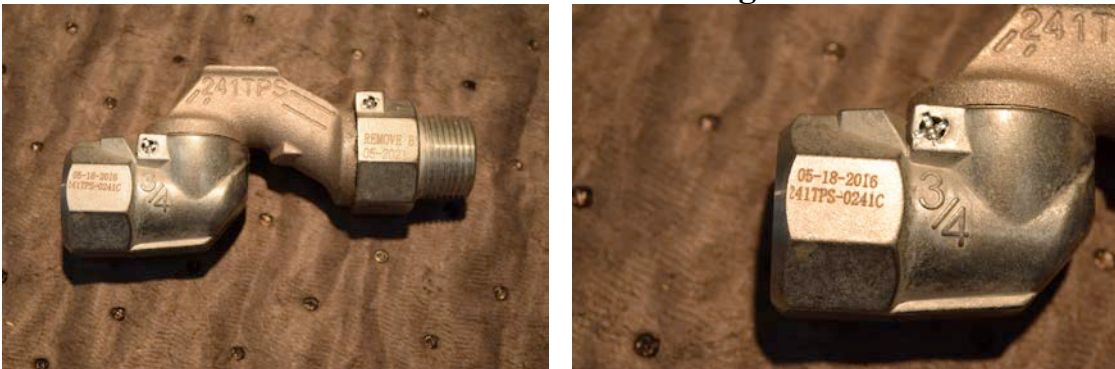
UPDATED URGENT RECALL ALERT – OPW SWIVELS

The 241 and 36S swivels were sold to gas stations as standalone units and as part of hose kits from January 1, 2013 to February 3, 2017. **The 20S swivels were sold from January 1, 2013 to May 8, 2017.** These products were not sold to individual consumers.

Model 20S with MFG Date 01 13 through 08 17:



Model 241C with MFG Date 01-01-2013 through 03-12-2017:

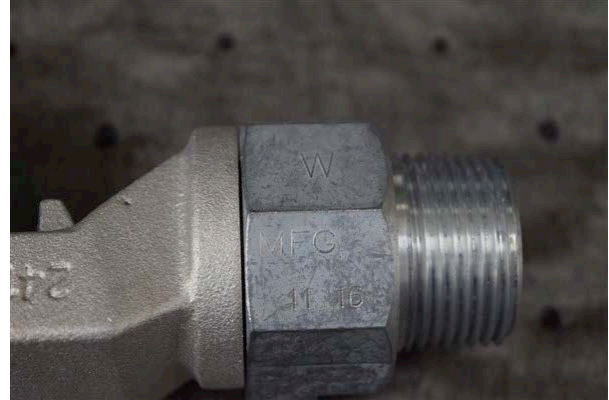


Model 241 with MFG Date 01 13 through 03 17:



UPDATED URGENT RECALL ALERT – OPW SWIVELS

Model 241-1000 1 inch swivels with MFG Date 01 13 through 03 17:



Model 241-1000C 1 inch swivels with MFG Date 01-01-2013 through 03-31-2017:



Model 36S 3/4 inch swivels with MFG Date 01-01-13 through 03-31-17:



UPDATED URGENT RECALL ALERT – OPW SWIVELS

Model 36S-5090 1 inch swivels with MFG Date 01-2013 through 03-2017:



IMMEDIATE ACTION REQUIRED:

- Inspect your gas pumps and identify any OPW swivel connectors with the affected model numbers and within the affected date range.
- Remove or replace all swivels with the affected model numbers and within the affected date range.
- If the swivel was installed as part of a hose kit, only the swivel needs to be replaced, not the entire hose kit.
- Register for the recall using the www.OpwSwivelRecall.expertinquiry.com website or by calling 1-866-562-5931 between 9am and 5pm EST Monday through Friday. You must provide contact information and certain information to identify the affected swivels to be replaced.
- OPW will directly ship new, alternative swivels to replace your recalled swivels.
- Tag and dispose of the recalled swivels per the instructions provided with your new swivels.
- REMOVE OR REPLACE AND DO NOT REUSE RECALLED SWIVELS. THERE IS A RISK OF FIRE, SERIOUS PERSONAL INJURY, AND DEATH.

OPW regrets this inconvenience to you and your business and appreciates your patience as we work to ensure the safety and quality of our products.