

**Date:** March 20, 2017  
**To:** OPW Retail Fueling Distributors, District Managers and Customer Service  
**From:** Charles Liebal, Product Manager

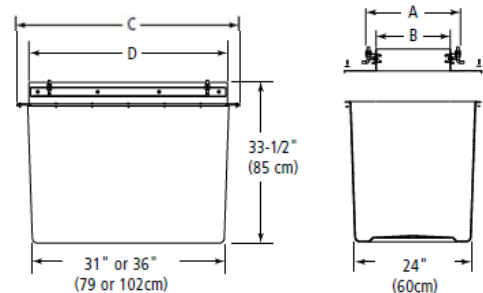
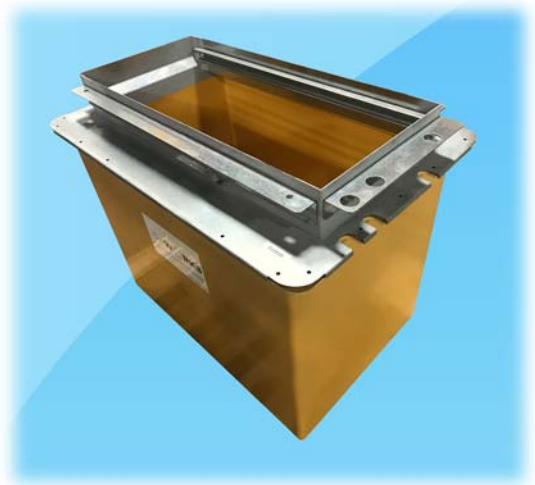
## Introducing our New Fiberglass Wide Access Dispenser Sump!

**Dear Valued Distributor:**

OPW Retail Fueling is proud to introduce our **new Fiberglass Wide Access Dispenser Sump to our OPW Dispenser Sump family!** The new DSF-1741C is designed for use with the new larger Wayne Helix 5000 Model Dispensers.

**The many features and benefits include:**

- **Conduitless Design:** The fiberglass base and metal cap and frame are designed to direct conduit into the dispenser along the side of the sump to avoid requiring additional entry boot penetrations
- **Multi-Product Flexible:** The wide sump surface area is designed to accommodate up to 4 product lines into the sump
- **Structural Integrity:** Engineered with thick side walls to withstand backfill and high water table forces. Precise glass and resin metering throughout the molding process ensures material consistency and maximizes the strength-to-weight ratio
- **Smooth Sealing Surfaces for Leak-Tight Sump Entry Fittings:** Our fully enclosed molding manufacturing method produces a uniform wall thickness while eliminating air entrapment. The result is a flat, smooth finish, both inside and out, which provides leak-tight pipe entries.



Sump Model #	Dimensions								Weight with top		Box Part No.	Top Assembly Part No.
	A		B		C		D					
	in	cm	in	cm	in	cm	in	cm	lbs	kg		
DSF-1741C	20.7	52.5	16.7	42.4	40.5	103	37	94	90	41	210051	212272

As always, we appreciate your continued support of OPW products. If you have any questions, please contact your OPW District Manager or our Customer Service Department at 1(800) 422-2525. For more information on our complete product line, please visit our website at [www.opwglobal.com](http://www.opwglobal.com).