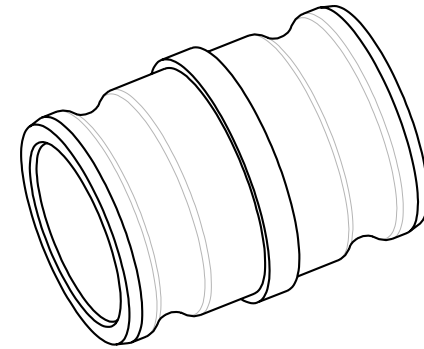
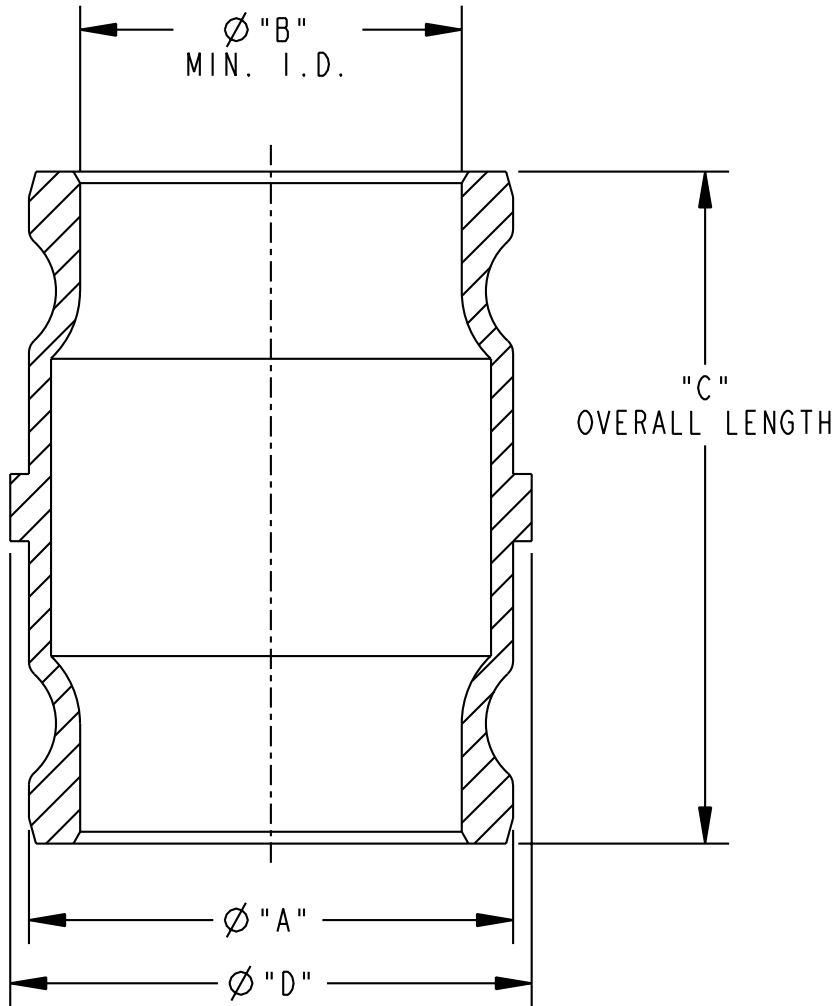


THIS DRAWING IS NOT TO BE SCALED. FOR ADDITIONAL INFORMATION, PLEASE CONTACT OUR ENGINEERING DEPT.

**REVISIONS**

LTR	ECN #	DESCRIPTION	DRAWN	APPROVED	DATE
REL	-	-	JPR	NAC	05-19-03
A	41494	PRODUCT NO. 633AA WAS 733A	SCK	NAC	05/10/06



SCALE 0.350

633AA-SS4040	4.72	3.94	4.47	4.42
633AA-SS3030	3.59	2.88	4.53	3.81
633AA-SS2020	2.48	1.81	4.12	2.64
633AA-SS1515	2.09	1.44	3.34	1.78
633AA-SS1212	1.78	1.16	3.48	1.47
633AA-SS1010	1.44	0.95	1.89	1.23
ADAPTOR SIZE	A	B	C	D

**CONFIDENTIAL** THIS DOCUMENT CONTAINS INFORMATION WHICH IS PROPRIETARY TO OPW, AND SHOULD BE PROTECTED ACCORDINGLY.

DESCRIPTION: 633AA SST AUTOLOK DOUBLE ADAPTOR

UNLESS OTHERWISE SPECIFIED  
 TOLERANCES ON DIMENSIONS  
 3 DECIMALS +/- 0.005  
 2 DECIMALS +/- 0.015  
 1 DECIMAL +/- 0.030  
 ANGLES +/- 1/2 DEG  
 MACHINED SURFACES 125 RMS MAX

SIGNATURES		MO-DA-YR
DRAWN BY:	JPR	05-19-03
CHECKED BY:	NAC	05-26-03
MATERIAL:	316 SST	WEIGHT: -

REV	SIZE	PART NUMBER:
A	H	633AA
SCALE: NONE		SHEET 1 OF 1

**OPW Engineered Systems**  
 A DOVER Resources Company  
 Lebanon, Ohio 45036 USA  
 3D GENERATED DRAWING