

345 Series Butterfly Valves

REPAIR PROCEDURE

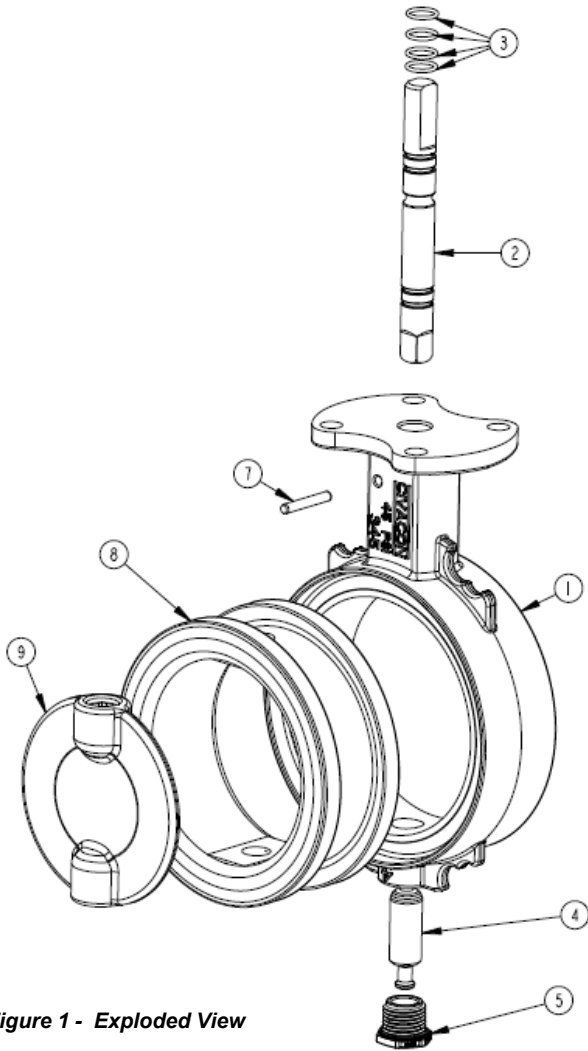


Figure 1 - Exploded View

1. Review Figure 1 before disassembling the valve
2. Remove dowel pin (7) using a punch and hammer. This will allow the top stem (2) to be removed with the valve handle or using a bench vice.
3. Remove bottom cap (5) and bottom stem (4) with a 15/16" wrench and pliers, respectively.
4. Once both the top and bottom stems are removed, replace the valve disk (9) and valve seat (8) with replacement components from kit.
5. Ensure that the holes in the valve seat (8) and valve disc (9) line up with the bore holes in the valve housing (1). Verify the valve disc (9) is installed with the round hole pointing in the direction of the bottom stem (4).
6. Re-Install the bottom stem (4) and bottom cap (5) into the housing (1).
7. Replace all 4 top stem O-rings (3) with replacement components from kit. Ensure to not damage top stem (2) during removal of O-rings and lube new O-rings after installed on top stem.
8. Re-Install the top stem (2) into the valve housing (1). Ensure that the flats on the stem are clocked parallel to the valve disc (9).
9. Re-install dowel pin (7) using a hammer. Make sure top stem (2) is fully inserted and held in place during installation of pin (7).

ITEM	PART NUMBER	DESCRIPTION	QTY.
1	4-345-206	4" 345 ALUMINUM HOUSING	1
2	4-6-345-TS	TOP STEM	1
3	12442	O-RING BUNA-N 2-014	1
4	4-6-345-BS	BOTTOM STEM	1
5	2-6-PPLG	PLUG, VALVE STEM	1

ITEM	PART NUMBER	DESCRIPTION	QTY.
7	12932	TOP STEM RETAINING PIN	1
8	4-500-522XXX	4" SEAT (see chart below)	1
9	4-300-322XXX	4" DISC (see chart below)	1

SEAT CHART MATERIAL					
BLACK NITRILE	WHITE NITRILE	EPDM	VITON	SILICONE	TEFLON
X-500-522700	X-500-522701	X-500-522515	X-500-522540	X-500-522561	X-500-522650

DISC CHART MATERIAL			
NODULAR IRON	STAINLESS STEEL	NYLON COATED	ALUMINUM BRONZE
X-300-322237	X-300-322209	X-300-322207U	X-300-322203

*NOTE (X)= VALVE SIZE